

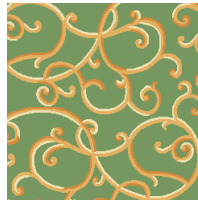
**Hotel Eco 001-1**



**001-2**



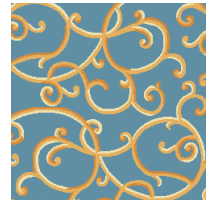
**001-3**



**001-4**



**001-5**



**Hotel Eco 002-1**



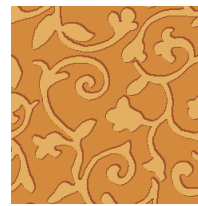
**002-2**



**002-3**



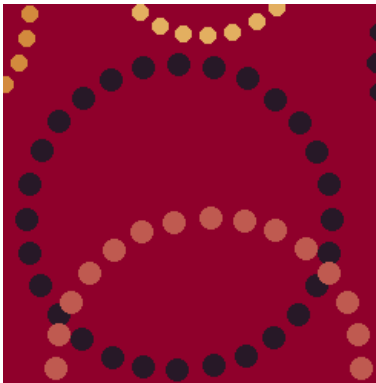
**002-4**



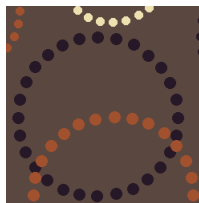
**002-5**



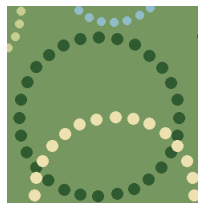
**Hotel Eco 003-1**



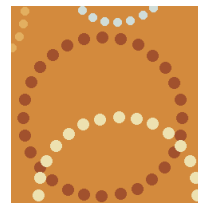
**003-2**



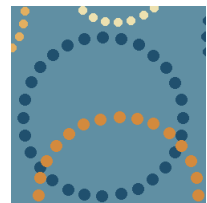
**003-3**



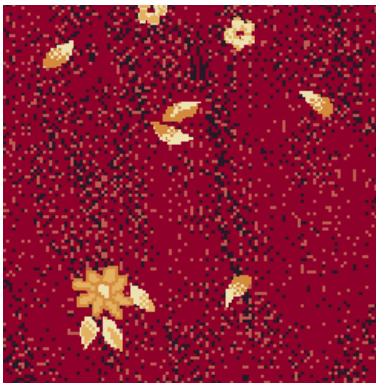
**003-4**



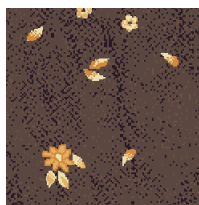
**003-5**



**Hotel Eco 004-1**



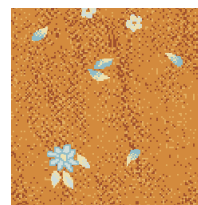
**004-2**



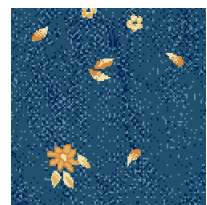
**004-3**



**004-4**



**004-5**



**Hotel Eco 005-1**

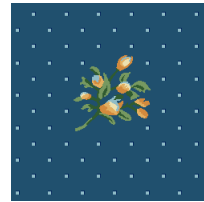
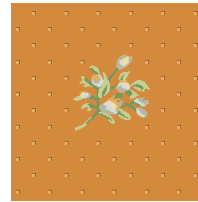
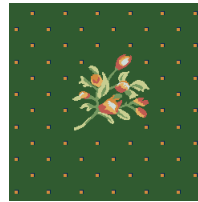
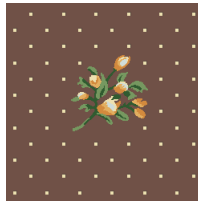


005-2

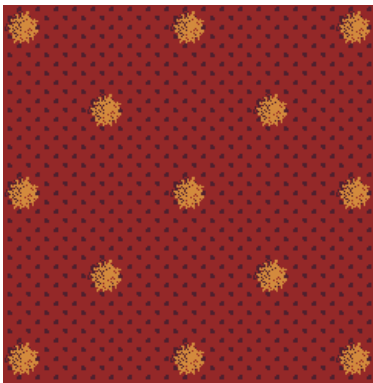
005-3

005-4

005-5



**Hotel Eco 006-1**

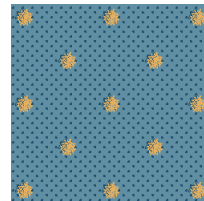
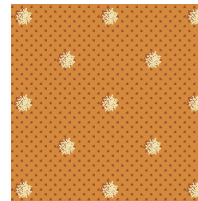
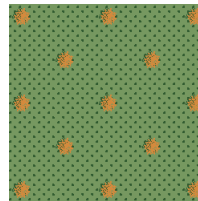
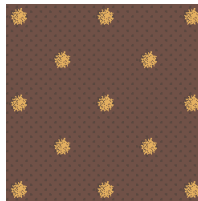


006-2

006-3

006-4

006-5



**Hotel Eco 007-1**

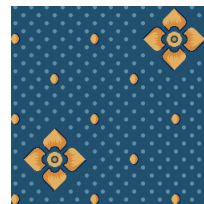
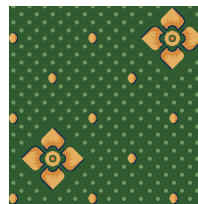
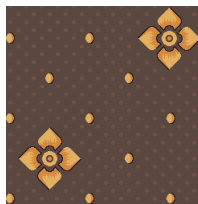


007-2

007-3

007-4

007-5



**Hotel Eco 008-1**

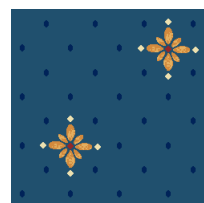
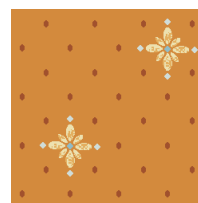
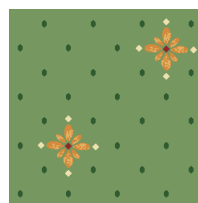
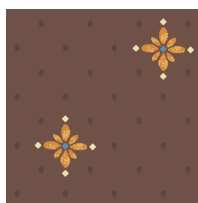


008-2

008-3

008-4

008-5



**Hotel Eco 009-1**

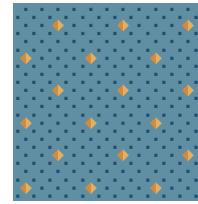
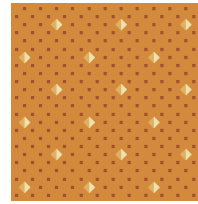
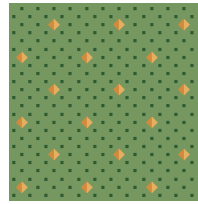
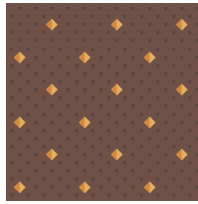


**009-2**

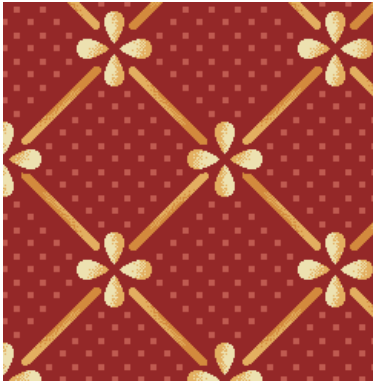
**009-3**

**009-4**

**009-5**



**Hotel Eco 010-1**

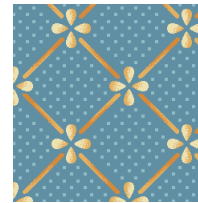
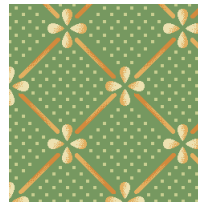
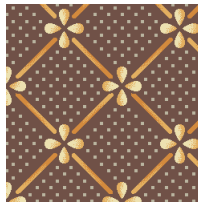


**010-2**

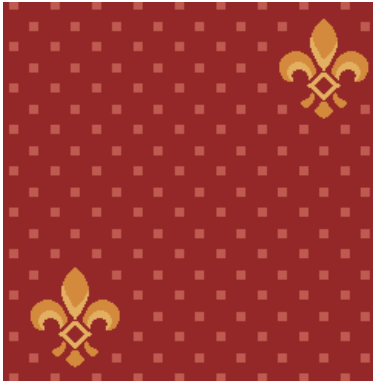
**010-3**

**010-4**

**010-5**



**Hotel Eco 011-1**

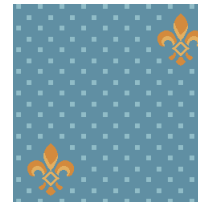
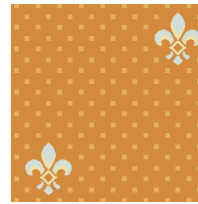
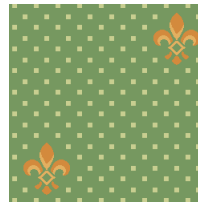
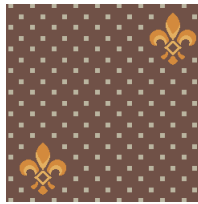


**011-2**

**011-3**

**011-4**

**011-5**



**Hotel Eco 012-1**

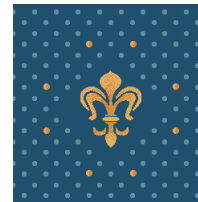
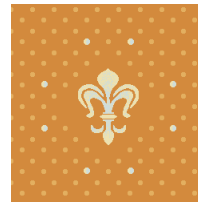
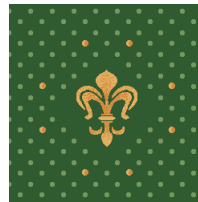
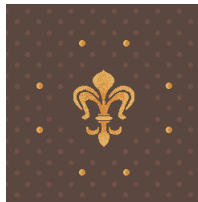


**012-2**

**012-3**

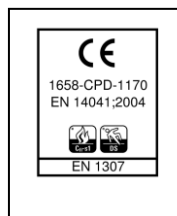
**012-4**

**012-5**



Datenblatt: „Hotel ECO 1000“

Warenkonstruktion		Tufting Velour Saxony 1/10*
Mustergestaltung		Chromojet Druck
Polmaterial nach TKG		100% Polyamid 6
Tufting-Träger		75% PES / 25% PA-Vlies
Rückenausrüstung		textililer Zweitrücken
Lieferform	Bahnenware	400 cm
Verwendungsbereich	EN 1307	gewerblich - stark (33)
Komfortwert	EN 1307	LC 2
Flächengewicht	ISO 8543	ca. 1970 g/m <sup>2</sup>
Gesamtdicke	ISO 1765	ca. 7 mm
Poleinsatzgewicht		ca. 910 g/m <sup>2</sup>
Polschichtdicke	ISO 8543	ca. 4,4 mm
Pol-Rohdichte	ISO 8543	ca. 0.15 g/cm <sup>3</sup>
Noppenzahl	ISO 1763	ca. 169850 /m <sup>2</sup>
elektrostatisches Verhalten	ISO 6356	≤ 2 kV
bewertete Trittschallminderung	ISO 140-8	ca. 27 dB
Schallabsorptionsgrad $\alpha_w$	ISO 354	ca. 0,2
Wärmedurchlaßwiderstand	ISO 8302	ca. 0,13 m <sup>2</sup> K/W
allgemeine bauaufsichtliche Zulassung (abZ)		Z-156.601-617
Brandverhalten	EN 13501	Cfl-s1
Lichtechtheit	DIN EN ISO 105 B02	≥ 5
Wasserechtheit	DIN EN ISO 105 E01	≥ 4
Reibechtheit	DIN EN ISO 105 X12	≥ 3-4



Zusatzeignungen



Technische Veränderungen, die der Qualitätsverbesserung dienen, behalten wir uns vor. Bei Velour-Teppichböden können in seltenen Fällen - ohne die Gebrauchstauglichkeit zu beeinträchtigen - bleibende Schattierungen (Shading) auftreten, deren Ursache nicht material- oder konstruktionsbedingt ist. Hierfür kann deshalb keine Gewährleistung übernommen werden.

Halbmond Bodenbeläge müssen gemäß der jeweiligen Halbmond Verlegeempfehlung und dem Stand der Technik entsprechend verlegt werden. Alle Angaben basieren auf derzeitigen Erkenntnissen und Erfahrungen. Sie können nur allgemeine Hinweise ohne Eigenschaftszusicherung sein, da wir keinen Einfluss auf die Baustellenbedingungen und die Verarbeitung haben. Sie befreien den Verleger wegen der Fülle möglicher Einflüsse bei der Anwendung unserer Produkte nicht von eigenen Prüfungen und Versuchen. Die regelmäßige Unterhaltsreinigung ist entscheidend für die Sauberkeit, Werterhaltung und das gute Aussehen des Bodenbelages.